

ADJOINING MAP NO. 1

TRACT NO. 26

NO. 26

NO. 26

NO. 26

NO. 26

NO. 26

NO. 26

NO. 26

NO. 26

NO. 26

NO. 26

NO. 26

NO. 26

NO. 26

NO. 26

NO. 26

NO. 26

NO. 26

NO. 26

NO. 26

NO. 26

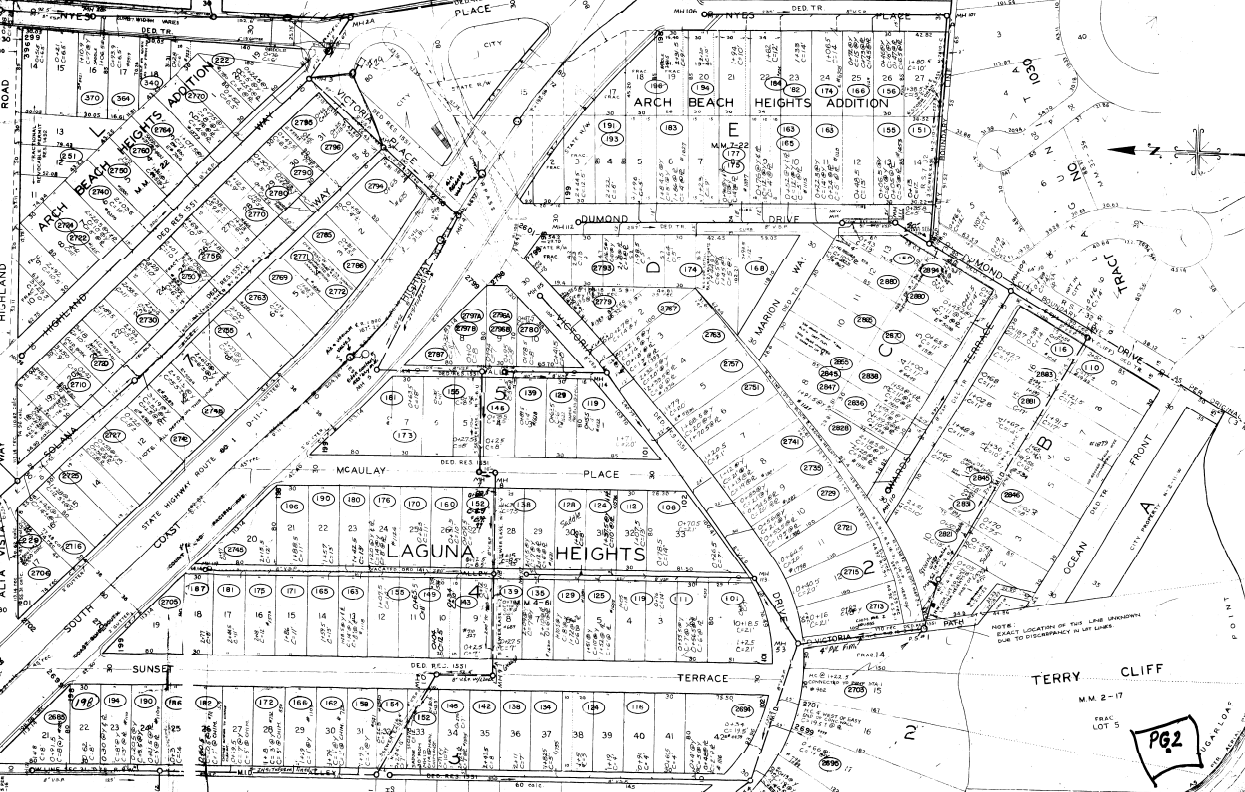
NO. 26

NO. 26

NO. 26

NO. 26

NO. 26



THE SOUTHERLY PORTION OF VICTORIA DRIVE IS PLACED HEREON AS ACTUALLY CONSTRUCTED ON THE GROUND FOR WHICH NO RECORD DATA CAN BE FOUND. FOR PLAT OF SAME AS PER DATA SHOWN ON TRACT MAP SEE DISTRICT MAP NO. 2-A.

REVISIONS	Description	Date
1	As Shown	1928
2	As Shown	1928
3	As Shown	1928
4	As Shown	1928
5	As Shown	1928
6	As Shown	1928
7	As Shown	1928
8	As Shown	1928
9	As Shown	1928
10	As Shown	1928
11	As Shown	1928
12	As Shown	1928
13	As Shown	1928
14	As Shown	1928
15	As Shown	1928
16	As Shown	1928
17	As Shown	1928
18	As Shown	1928
19	As Shown	1928
20	As Shown	1928
21	As Shown	1928
22	As Shown	1928
23	As Shown	1928
24	As Shown	1928
25	As Shown	1928
26	As Shown	1928
27	As Shown	1928
28	As Shown	1928
29	As Shown	1928
30	As Shown	1928
31	As Shown	1928
32	As Shown	1928
33	As Shown	1928
34	As Shown	1928
35	As Shown	1928
36	As Shown	1928
37	As Shown	1928
38	As Shown	1928
39	As Shown	1928
40	As Shown	1928
41	As Shown	1928
42	As Shown	1928
43	As Shown	1928
44	As Shown	1928
45	As Shown	1928
46	As Shown	1928
47	As Shown	1928
48	As Shown	1928
49	As Shown	1928
50	As Shown	1928

DEPARTMENT OF PUBLIC WORKS  
DISTRICT

PG 2