

DATE	DESCRIPTION	BY	CHECKED	APPROVED
10-19-78	ADD C&G, C&B EASE ON DIEMETROLOGS ST. EDR	JAH		
7-3-78	Added sewer information.	JAH		

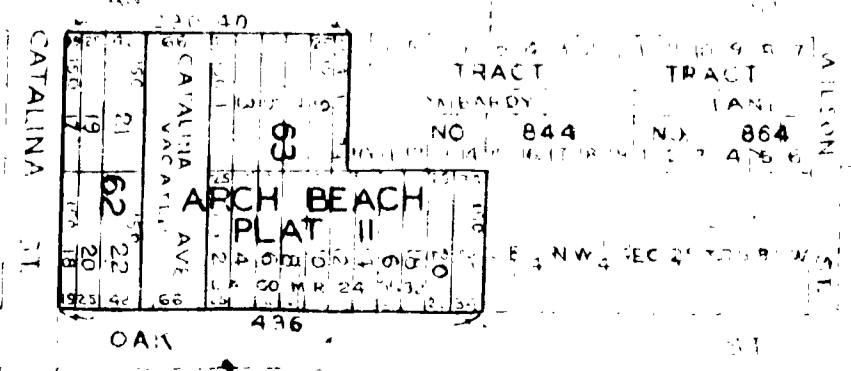
THE MARGINAL MAP AT RIGHT SHOWS THE REMAINING LOTS IN BLOCKS 66 AND 65 OF ARCH BEACH, PLAT II, AND CATALINA AVE VACATED BY THE BOARD OF SUPERVISORS OF LOS ANGELES COUNTY ON MARCH 7, 1977.

ON MAY 3, 1894, BY REDEVISION MAP OF A PART OF PLAT II OF ARCH BEACH, BLOCK 66, ALL LOTS IN BLOCKS 43, 44, 45, 50, 51, 52, 53, 58, 59, 60, 61, 66 WILL INTERFERE, AND THE LAND IN THESE BLOCKS WERE REVERTED TO ACRES, RETAINING THE BLOCK NUMBERS.

ORANGE COUNTY ASSESSOR'S MAPS APPEAR TO BE IN ERROR SHOWING THE LOTS IN BLOCKS 62 AND 63 AS METES AND BOUNDS PARCELS OF SEC. 25, T.13 S., R.9 W. THESE TWO BLOCKS WERE NOT INCLUDED IN THE ACRES REVERTED BLOCKS.

ON THIS MAP DATA IN THESE BLOCKS ARE SHOWN ACCORDING TO THE ORANGE COUNTY ASSESSOR'S MAPS.

THE MARGINAL MAP SHOWS LAND IN QUESTION AS PER LATEST RECORDED MAPS. DOTTED LINES ARE METES AND BOUNDS PARCEL LINES AS PER ASSESSOR'S MAPS.



MARGINAL MAP

DEPARTMENT OF PUBLIC WORKS ENGINEERING DIVISION
 DISTRICT MAP
 APPROVED: [Signature]
 DATE: [Date]