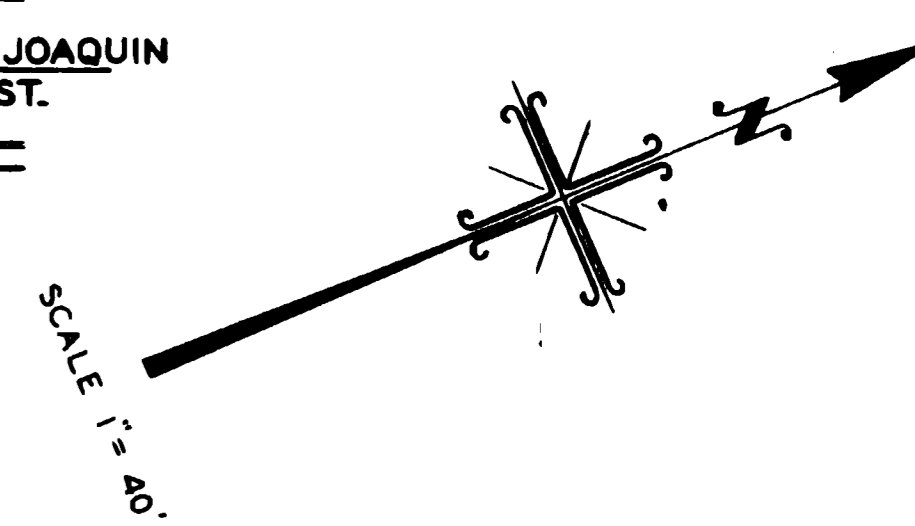
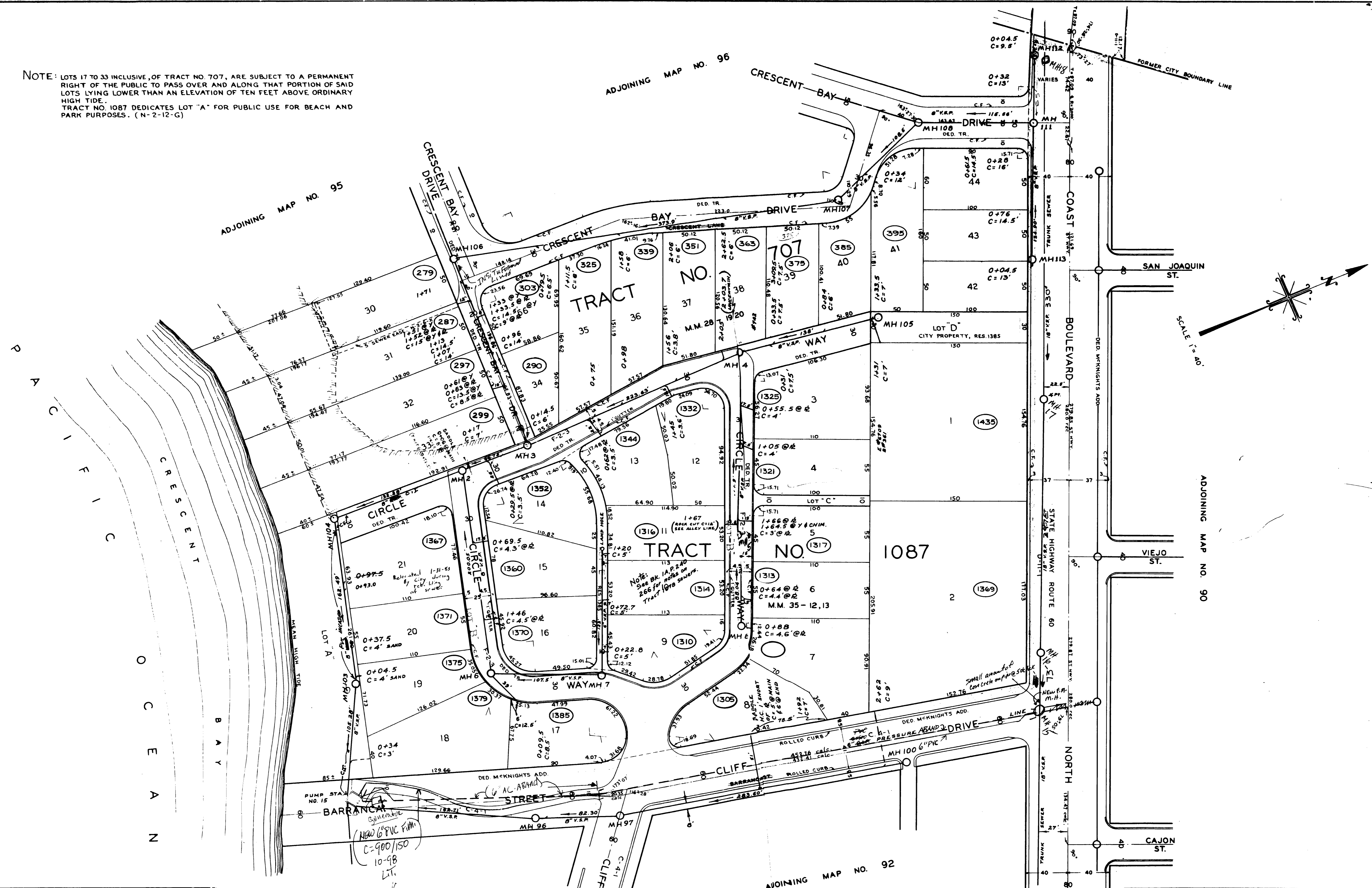


NOTE: LOTS 17 TO 33 INCLUSIVE, OF TRACT NO. 707, ARE SUBJECT TO A PERMANENT RIGHT OF THE PUBLIC TO PASS OVER AND ALONG THAT PORTION OF SAID LOTS LYING LOWER THAN AN ELEVATION OF TEN FEET ABOVE ORDINARY HIGH TIDE.  
TRACT NO. 1087 DEDICATES LOT "A" FOR PUBLIC USE FOR BEACH AND PARK PURPOSES. (N-2-12-G)



REVISIONS				
DATE	DESCRIPTION	BY	CHECKED	APPROVED

CITY OF LAGUNA BEACH, CALIFORNIA  
DEPARTMENT OF PUBLIC WORKS - ENGINEERING DIVISION  
PAUL V. HENNESSY - CITY ENGINEER

**DISTRICT MAP SEWERS**

APPROVED: \_\_\_\_\_ DATE: \_\_\_\_\_

DRAWN BY: V. AZNAR CHECKED BY: \_\_\_\_\_ SUPERVISOR BY: \_\_\_\_\_