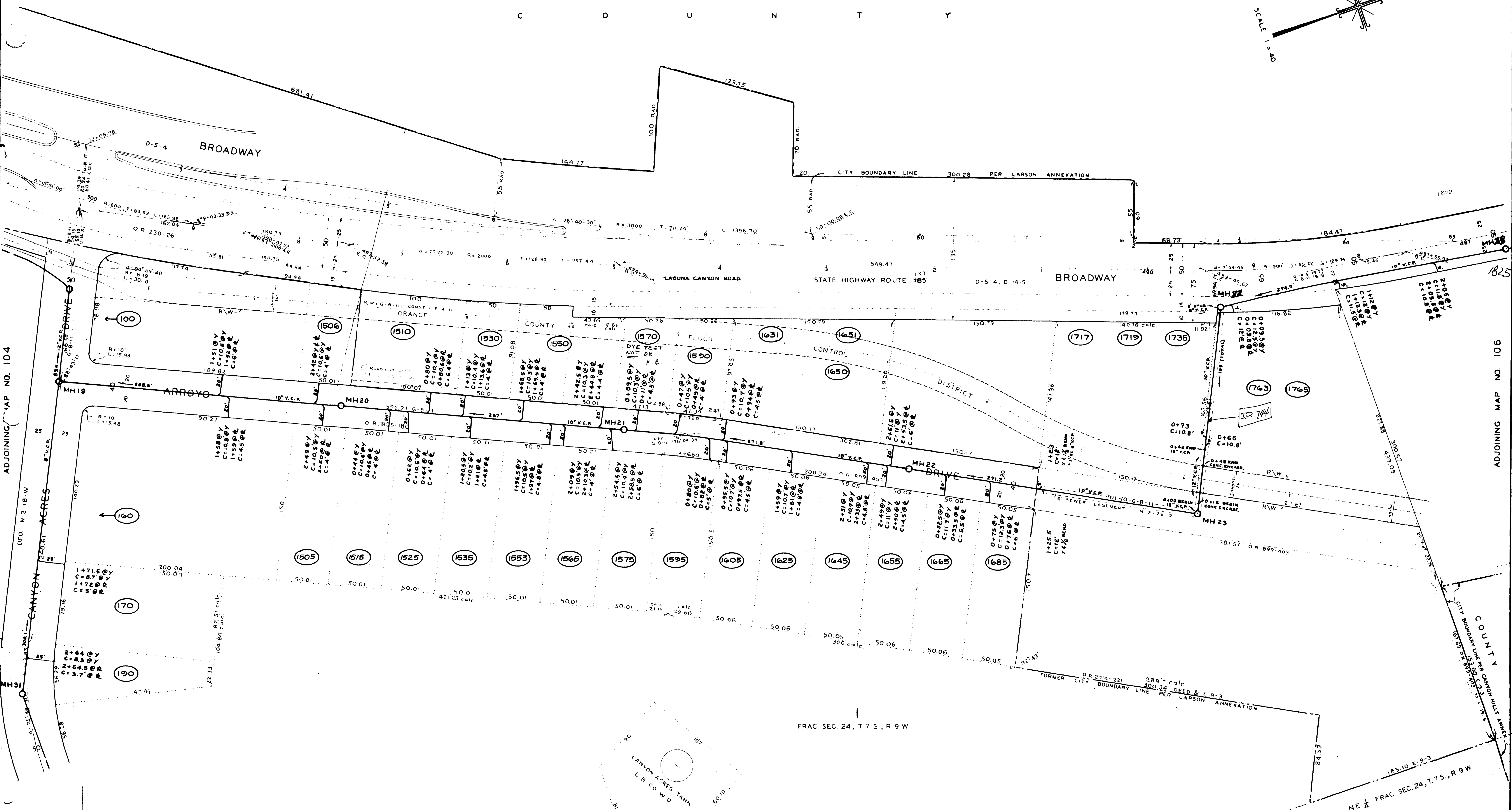
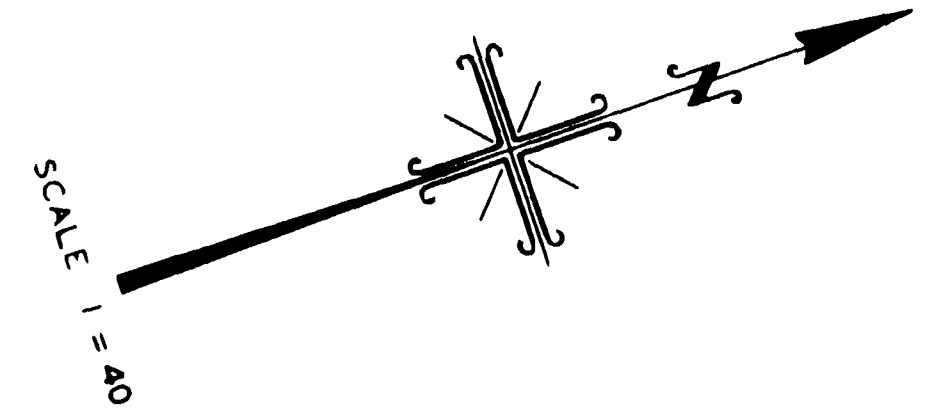


IRVINE'S SUBDIVISION

185
MM 1-88

C O U N T Y



ADJOINING MAP NO. 104

ADJOINING MAP NO. 106

FRAC SEC 24, T 7 S., R 9 W

REVISIONS				
DATE	DESCRIPTION	BY	CHECKED	APPROVED

NOTES
STATIONING ON STATE HIGHWAY R/W IS PER R/W PLAN VII-ORA-185-LGN B. A., FILE NO D-14-5 & D-5-4 IN THE OFFICE OF THE CITY ENGINEER.
STATIONING ON OLD LAGUNA CANYON ROAD IS PER ORANGE COUNTY ROAD DEPT PLAN OF NOV 4, 1929, ON FILE IN THE OFFICE OF THE CITY ENGINEER

ADJOINING MAP NO. 110

TRaverse BOOK 2 - PAGES 81 TO 90

CITY OF LAGUNA BEACH, CALIFORNIA
DEPARTMENT OF PUBLIC WORKS - ENGINEERING DIVISION
GEORGE DE CHELLIS - CITY ENGINEER

DISTRICT MAP
SEWERS

DRAWN BY V AZNAK	CHECKED BY B. C. INGRAM	SUPERVISED BY B. C. INGRAM	DRAWING AND TITLE NO. S 105
---------------------	----------------------------	-------------------------------	--------------------------------

APPROVED _____ DATE _____
CITY ENGINEER