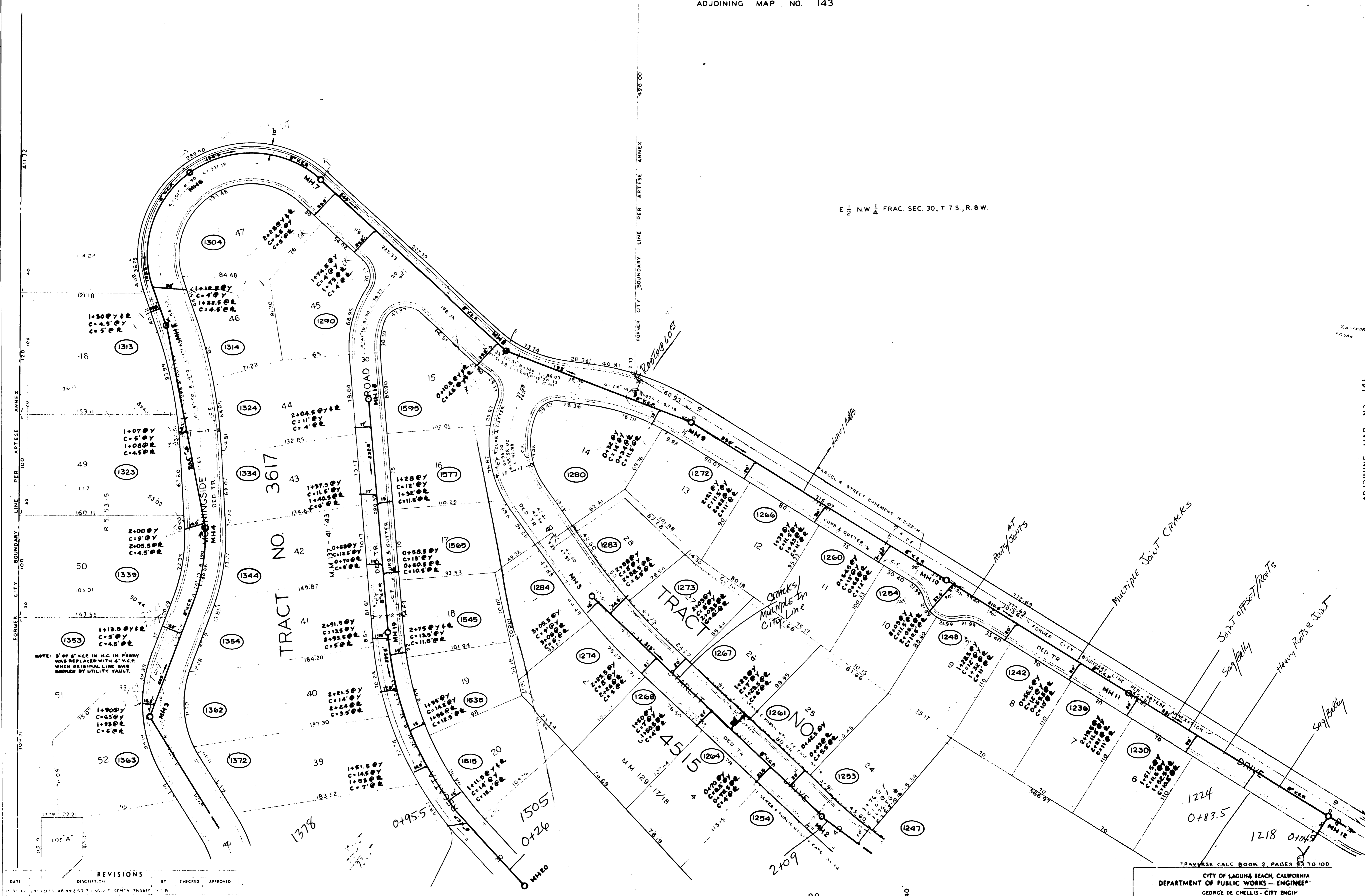


E 1/2 N.W 1/4 FRAC. SEC. 30, T. 7 S., R. 8 W.

ADJOINING MAP NO. 118

ADJOINING MAP NO. 141

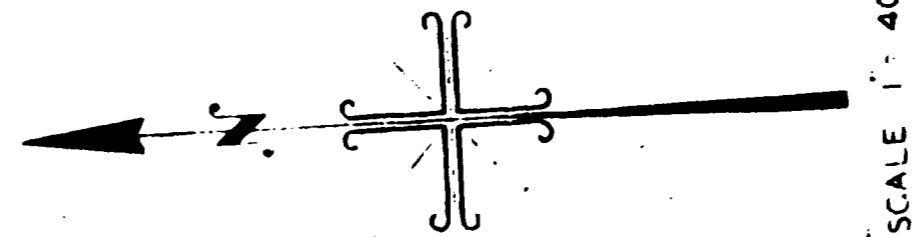


NOTE: 3" OF V.C.P. IN H.C. IN P.WAY WAS REPLACED WITH 4" V.C.P. WHEN ORIGINAL LINE WAS DAMAGED BY UTILITY VAULT.

DATE	DESCRIPTION	BY	CHECKED	APPROVED

EAST LINE LOT 1, FRAC. SEC. 30, T. 7 S., R. 8 W.

ADJOINING MAP NO. 137



APPROVED \_\_\_\_\_ DATE \_\_\_\_\_  
 CITY ENGINEER

TRaverse Calc Book 2, Pages 53 to 100

CITY OF LAGUNA BEACH, CALIFORNIA  
 DEPARTMENT OF PUBLIC WORKS - ENGINEER  
 GEORGE DE CHELLIS - CITY ENGINEER

**DISTRICT SEWER**

130  
 DRAWN BY V. AZNAK  
 CHECKED BY B. C.  
 SUPER